

RERAP10122022121748-1

SARASWATI ABODE

East Gola Road , Patna



**SERVING YOU THE
WISDOM OF ARCHITECTURE**



**AADAYAE CONSTRUCTION
PRIVATE LIMITED**

+91 6398292896, +91 9471710262

www.aadaya.in



AADAYAE CONSTRUCTION PRIVATE LIMITED

WHO WE ARE

We are one of the top builders in Patna and Ranchi, We are known for our perfection in the real estate development sector. Our expert team of engineers and professionals have created numerous architectural marvels that has become a standard for our competitors as well as people in the town. Our work spans include building different architectural structures like duplexes, flats, townships, plots, colonies, and other custom requirements according to our customer demands. The main aim of our brand is to achieve customer satisfaction and we do this by developing eco friendly , sustainable and innovative residential and commercial real estate buildings. The main differentiating factor of our brand is world-class work at affordable rates. We had started small, but with constant innovation, hard work, and dedication we have reached greater heights in this sector . We have other ongoing commercial, residential, and township projects in Patna - Ranchi, for those looking for quality and affordability. With our structural sound construction and creativity, our customers can be sure about quality without any fear.

OUR STORY

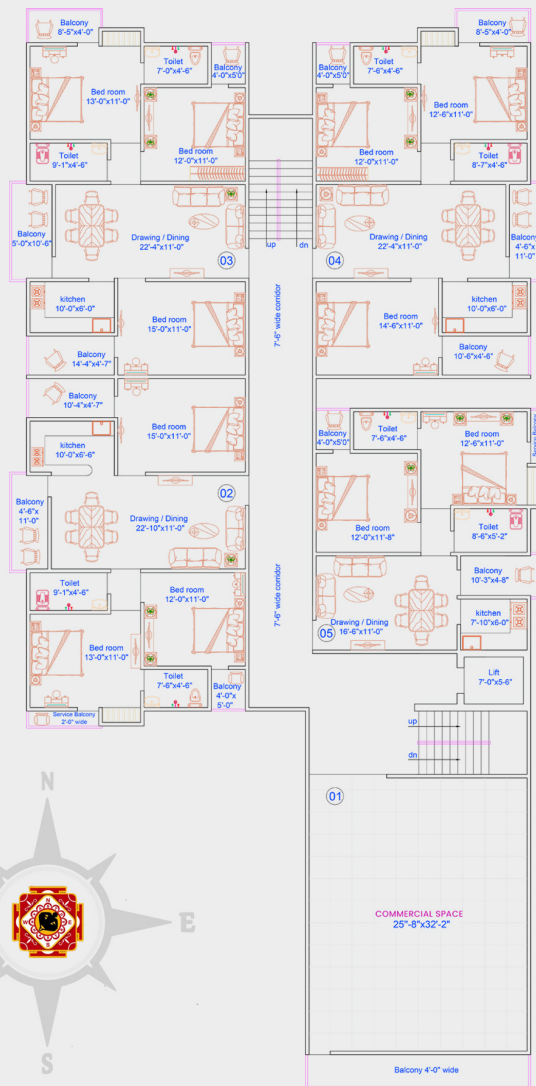
Our Journey in the real estate industry began in the early 1960 year. Our Grand Father Late. Mr. Krishna Mahto initiated his real estate business from Gola Road in Patna, Bihar. Since then we have been providing innovative and luxurious real estate solutions to several families and ambitious entrepreneurs like you. We have catered to numerous classes of the society such as farmers, landowners, govt officials, cooperative societies, businessmen, investors, and several others. We are most trusted Realestate and developers in Patna and we are known for our perfection in the real estate and development industry. In real estate development we have used the latest technology and expert engineers and professionals of the construction industry to successfully carry forward the tradition of high quality real estate services from one generation to another with the support of our esteemed and satisfied clients.

RESPONSIBILITY

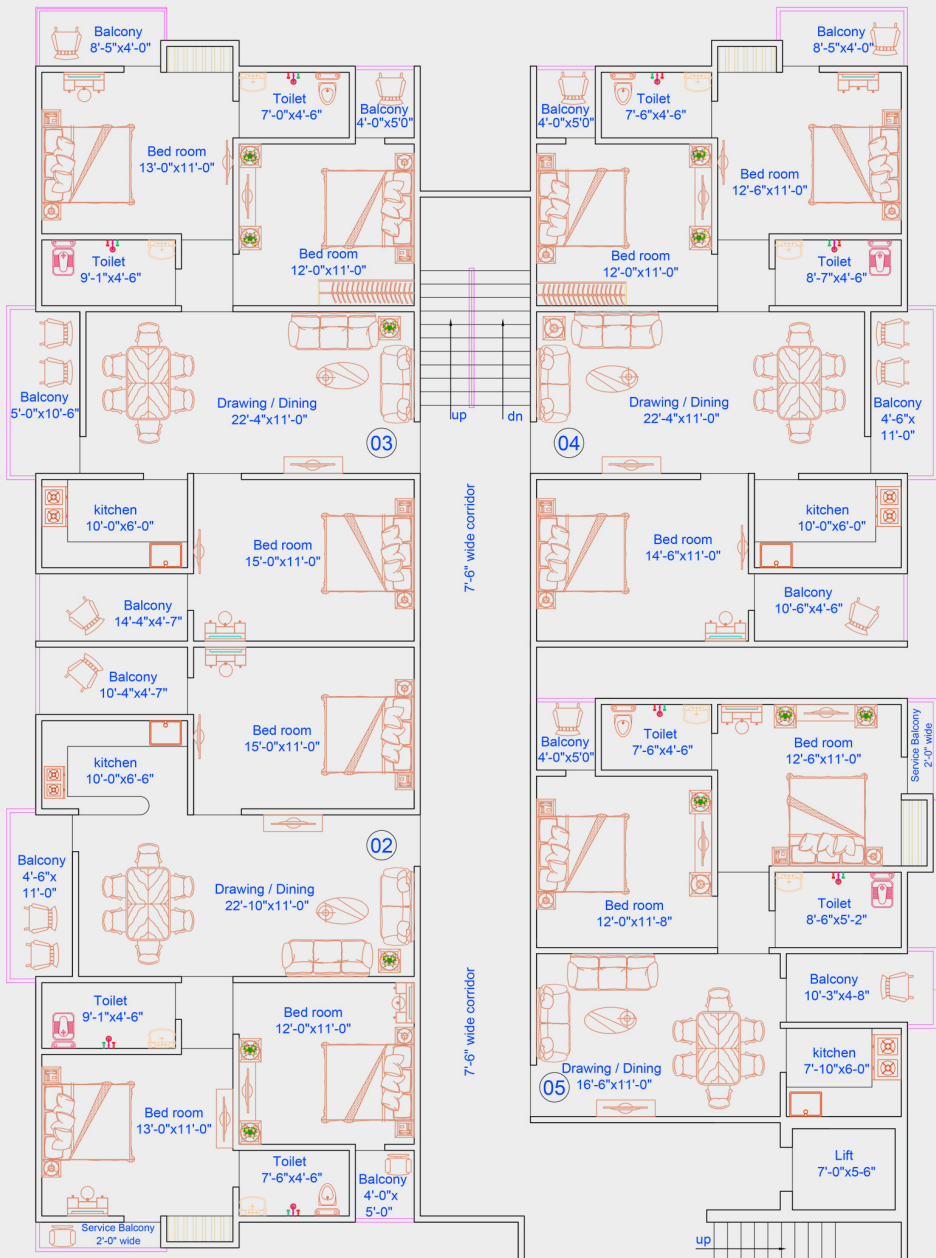
The management and team of Aadaya Real estate development work with dedication and focus across the day to provide high-end and quality real estate solutions to the people across the nation who are continuously looking for new properties or land for commercial or personal usage or investment purposes. Our work spans building different structures like duplexes, flats, plots townships, colonies, and other custom requirements according to our customer demands. The main aim of our brand is to achieve customer satisfaction and we do this by developing eco-friendly, sustainable and innovative residential and commercial real estate buildings.



G+1 to G+4 Floor Plan

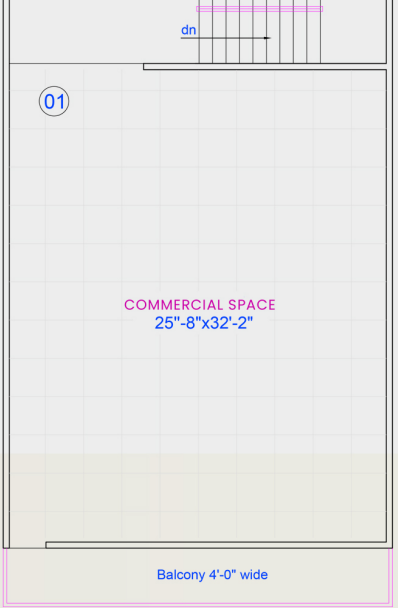


Property	Carpet Area	Balcony Area	Builtup Area	Super Builtup Area	Description
1	829.40 Sq.Ft.	106.03 Sq.Ft.	874.00 Sq.Ft.	1280.00 Sq.Ft.	Commercial Space
2	888.00 Sq.Ft.	135.00 Sq.Ft.	1080.00 Sq.Ft.	1558.00 Sq.Ft.	3 BHK Flat
3	882.00 Sq.Ft.	159.00 Sq.Ft.	1098.00 Sq.Ft.	1582.00 Sq.Ft.	3 BHK Flat
4	867.00 Sq.Ft.	154.00 Sq.Ft.	1083.00 Sq.Ft.	1562.00 Sq.Ft.	3 BHK Flat
5	639.00 Sq.Ft.	82.00 Sq.Ft.	775.00 Sq.Ft.	1146.00 Sq.Ft.	2 BHK Flat



G+1 to G+4 Floor Plan

Expanded view*



SPECIFICATIONS

STRUCTURE:

Ground+4(Four) Floor. R.C.C. Frame Structure as per drawing & design with earthquake resistant

CIVIL WORK:

First Quality black work in cement, sand mortar as per drawing & design

FINISHING:

All internal walls finish with plaster of paris and surface with weather coat only in front and rest all three sides with cement base paint from asian paint company.

DOORS:

Sal wood Chaukhat with 30mm water proof flush door.

WINDOWS:

UPVC glass windows with sound dampening.

BALCONY:

UPVC and Glass finish balcony railings

FLOORING:

1. Ceramic tiles
2. Granite flooring in stair.
3. Checked Tiles in parking space.

KITCHEN:

1. Provision of Black Granite platform and Wall of Ceramic tiles upto 2ft. height.
2. One premium steel sink with hot water function.

AMENITIES:

Automatic Lift 8 person , Generater, Plantiation along Boundary wall, and Beautification and plantation on terrace.

ELECTRICAL:

Concealed PVC conduit with copper wiring with anchors Fittings or equivalent make with adequate light and power points in bed rooms, kitchen, both toilet and dinning space. provision of exhaust point in kitchen & toilet.

P.H.E. WORK:

Common water tank for the block. each. Each toilet finished with geyser point, washbasin, I.W.C. or E.W.C. pan with cistern and all tdp fittings of C.P. of standard make Jal all sanitary Euro will be done with PVC & CPVC Astral pipes. all water connection with ISI approved. Gland PVC pi pe and fittings,

PLASTER:

15mm and 18mm plaster in CM 1:6 on RCC source and brick surface.

TOILET:

Premium ceramic tiles upto 7ft. height bathroom fittings of premium make.

OTHER FEATURE:

Boring will be fitted with submersible pump as per design. One wash basin in dinning space.

OTHER CHARGES:

Parking, Lift and Generator

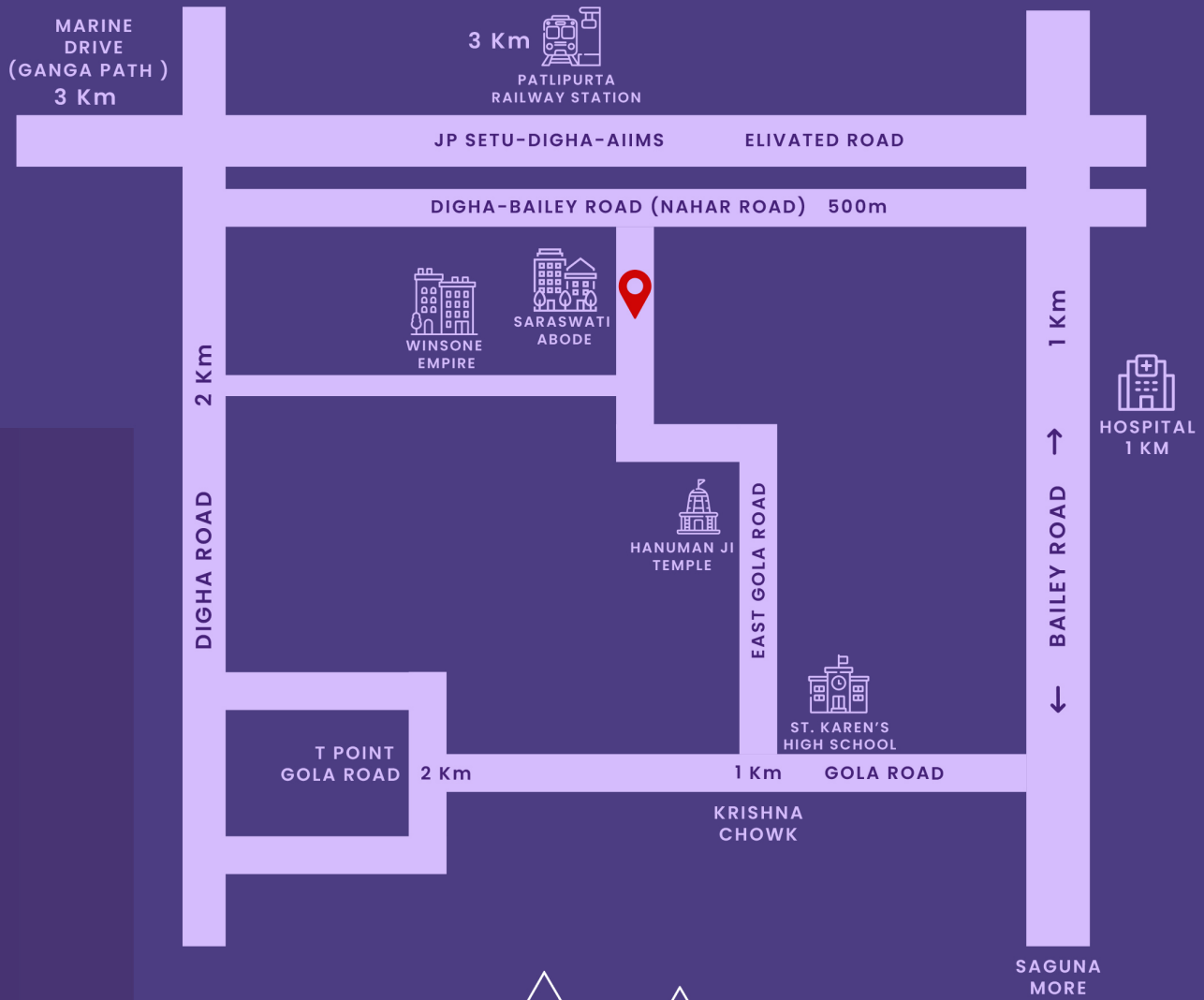
PAYMENT SCHEDULE

1. (a) 10% at the time booking
(b) Balance in remaining quarterly instalments.
(c) Full and final settlement of accounts has to be done one month before delivery of possession.
2. Discount against full payment at the time of booking may be availed.

HOUSING LOANS

The developer will help in arranging long term housing loans for the flat buyers form bank/ HDFC, ICICI and other housing Institutions.

Note : The Brochure is purely conceptual and not a legal Documents.



RERAP10122022121748-1

**AADAYAE CONSTRUCTION
PRIVATE LIMITED**

+91 6398292896, +91 9471710262

www.aadayae.in

Ramsahay market, Krishna chowk,
Gola Rd, Danapur, Bihar 801503

aadayae.constructions@gmail.com

ARYAN ARCHITECTS

ARCHITECTS , INTERIOR & LANDSCAPE DESIGNERS

9693615566 , 9334999262

Jyotipuram colony, Jagdeo path, Patna